

Vítor Oliveira

# O PLANO DIRETOR MUNICIPAL (PDM) DO PORTO DE 2006

Doutoramento em Arquitetura ULP 2014-15



vitor oliveira the urban form of porto

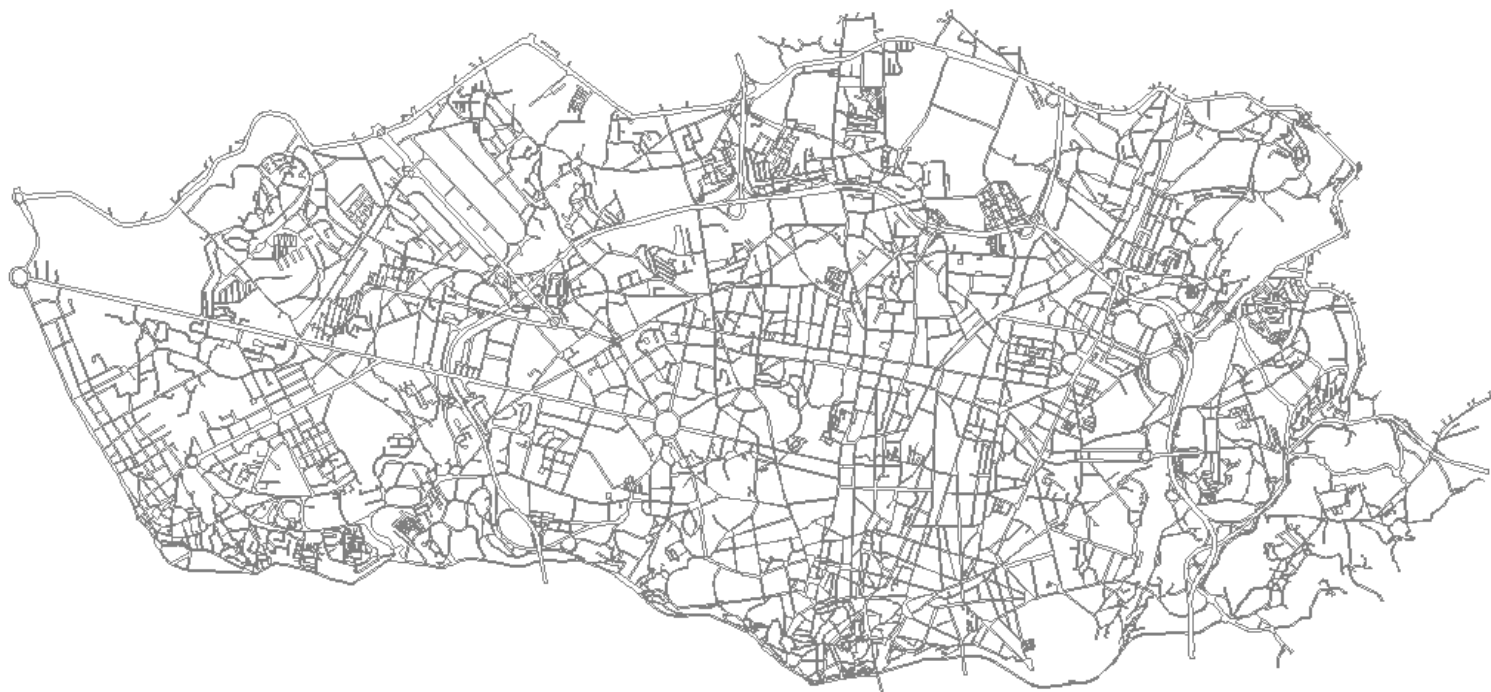
1. The origins of Porto
2. Within the 14th century wall
3. Outside the wall: the *Junta das Obras Públicas* (1764 - 1833)
4. Expanding the city north and west
5. The city in the 20th century
6. Future challenges

# 1. The origins of Porto





international seminar on urban form . 3-6 july . porto



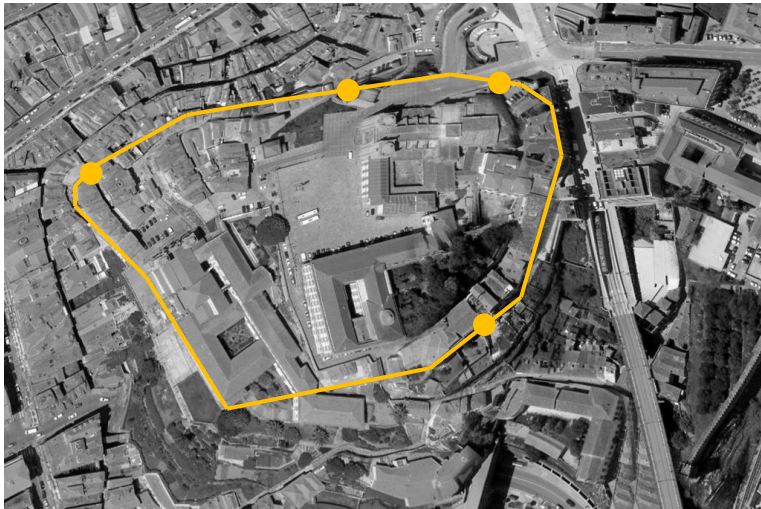
international seminar on urban form . 3-6 july . porto



Despite some previous forms of human occupation developed since the eighth century BC, the history of Porto as a town began in 1123 with the attribution of the so-called *foral*.



## The castle town



Source: AHMP

Porto was mainly constituted by a small castle town (surrounded by the Romanesque city wall probably built in the 6<sup>th</sup> century) with 3,5ha including a cathedral, a residential building for the clergy and a small market .

The area of the cathedral before the demolitions in the 1940s



Source: Domingos Alvão



Source: AHMP



Source: DGEMN

## Rua D. Hugo (within the Romanesque wall)



Source: Porto SRU

*Rua D. Hugo*



Source: Teófilo Rego

*Beco dos Redemoinhos*

(includes the most ancient house in Porto, 14 th century)



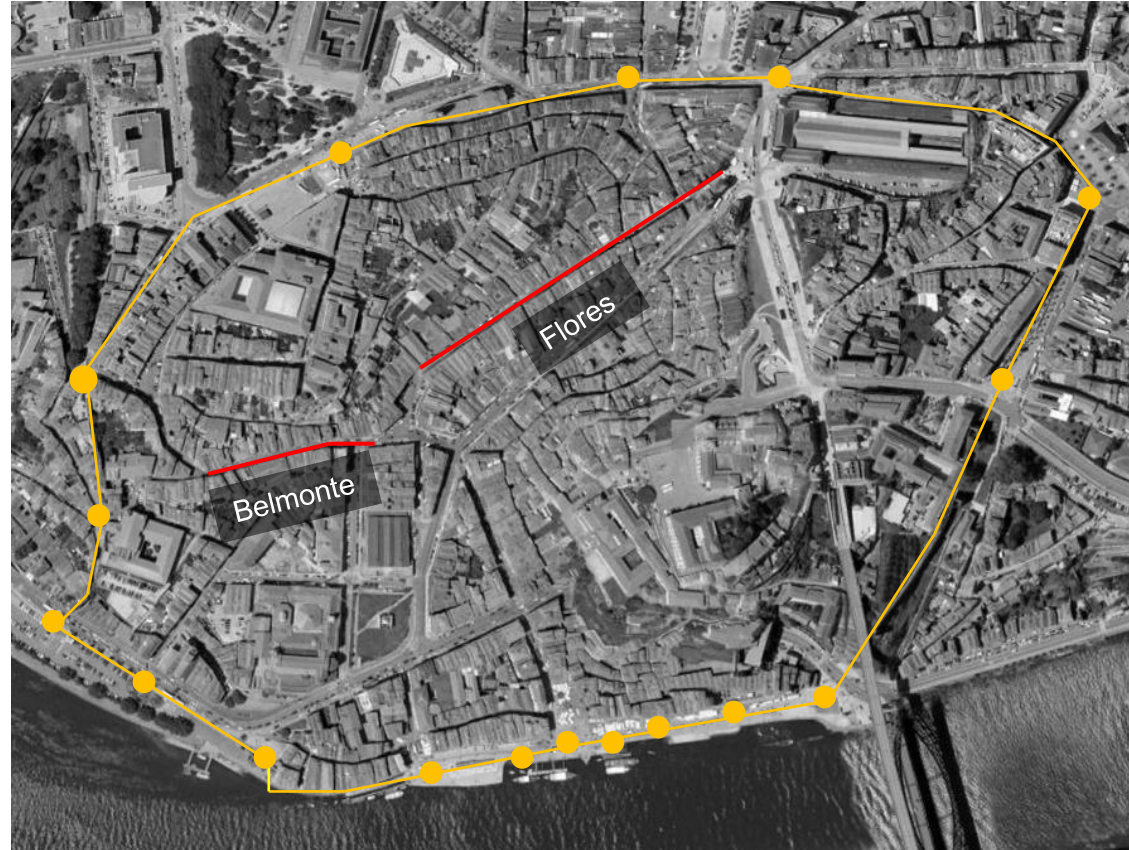
Source: Teófilo Rego

## 2. Within the 14th century wall





In the fourteenth century (1336-47), a new city wall was built, encompassing an overall area that was twelve times superior to the former (and including the *Ribeira*, by then the main port of the city).



The increasing port activity in the beginning of the sixteenth century, mainly based on the Porto wine trade with Britain, led to the introduction of some changes in the medieval city, namely the construction of new streets within it (Flores, Belmonte...) and some improvements in the city wall.

In the beginning of the eighteenth century, the economic development of the city, supported by Brazilian gold and diamonds, allowed the construction of a set of Baroque buildings (*Clérigos, Misericórdia...*).







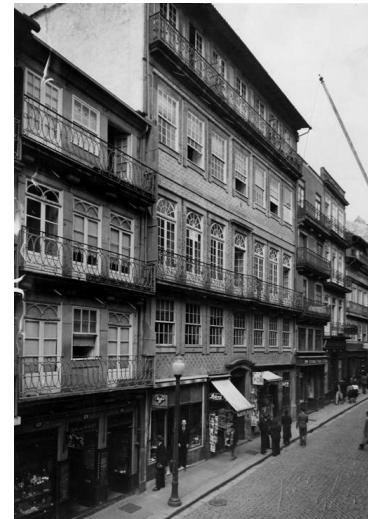
## Buildings in the *Rua das Flores*



Source: Teófilo Rego (1961)



Source: Teófilo Rego (1958)



Source: AHMP (1942)



Source: AHMP (1890)

Parts of the 14<sup>th</sup> century wall (in the turning to the 20<sup>th</sup> century)



Source: AHMP



Source: AHMP

### 3. The *Junta das Obras Públicas* (1764-1833)

## The new streets built by the *Junta*

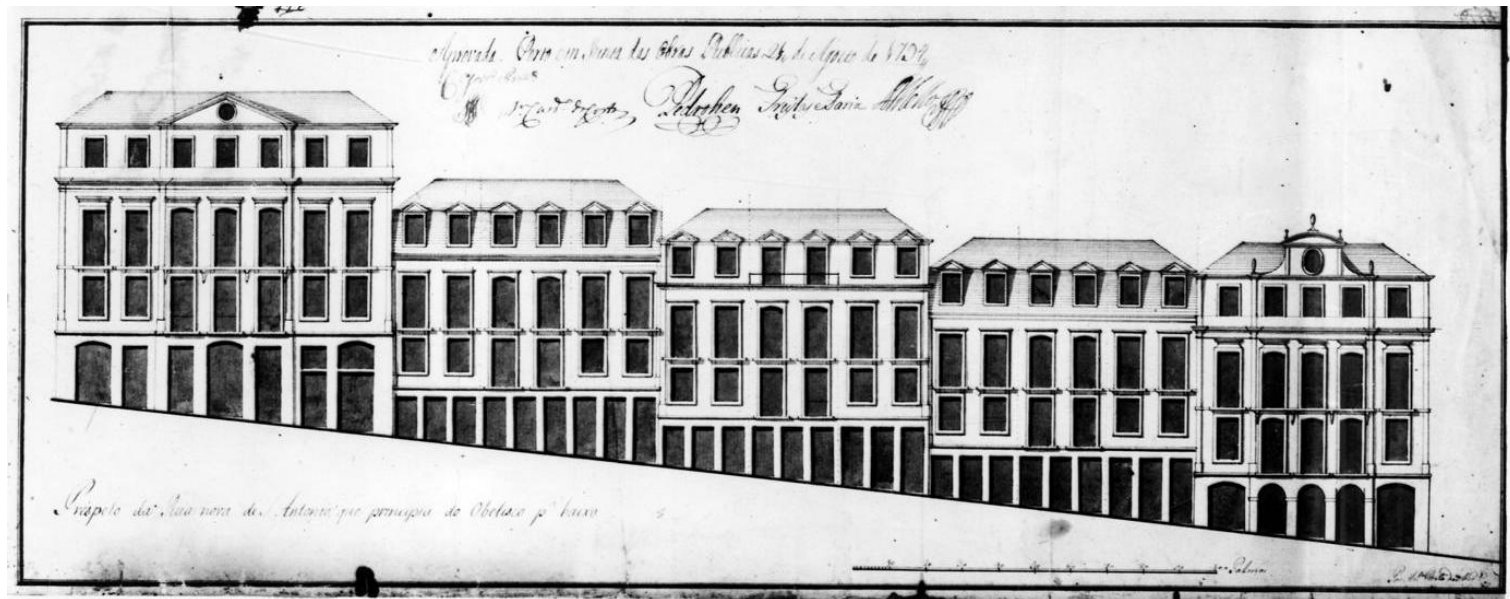
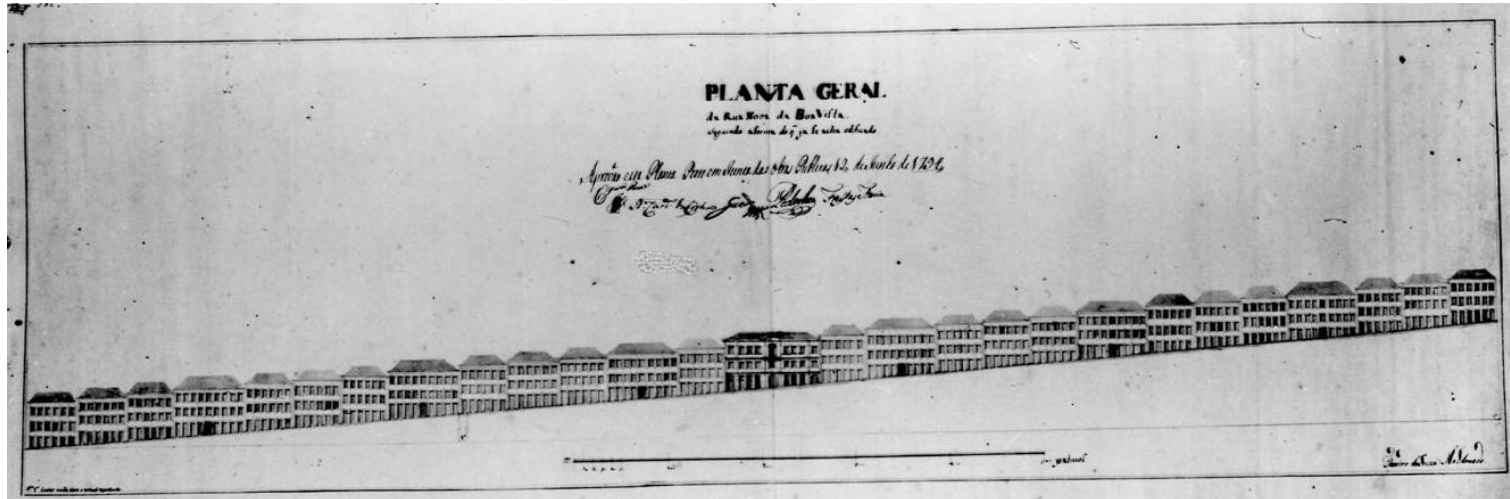


Source: Barata (1996) over a 1892 map

In 1764 the *Junta das Obras Públicas* is established as a public agency responsible for urban planning and management. The *Junta* focused on two different areas, the historical kernel and the territory outside the city wall. It was initiated one of the most interesting periods in the urban history of Porto.

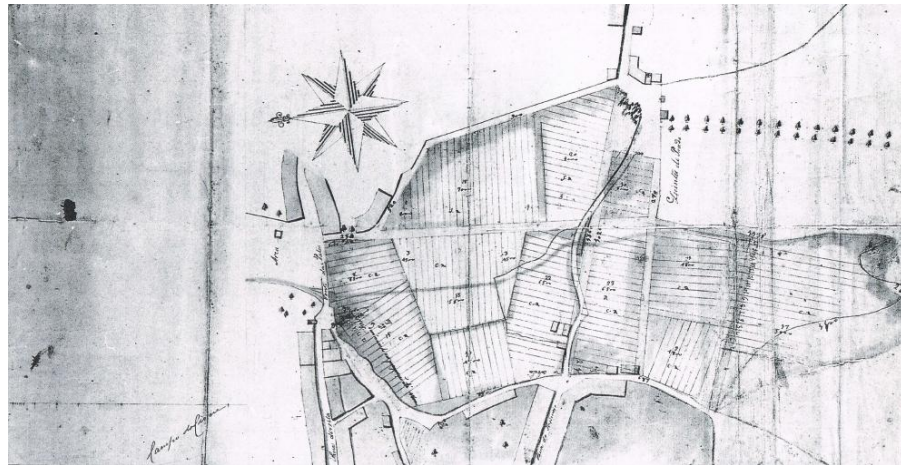
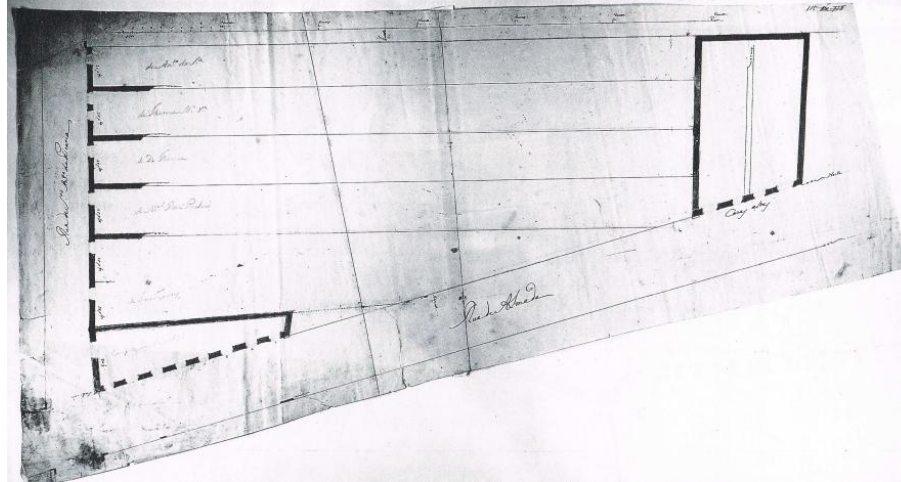


Facade design for *Rua da Boavista* and *Rua 31 de Janeiro*



Source: AHMP

## Land subdivision process



Source: AHMP

## Buildings in the *Rua do Almada*



Source: AHMP (1900)



Source: AHMP (1961)



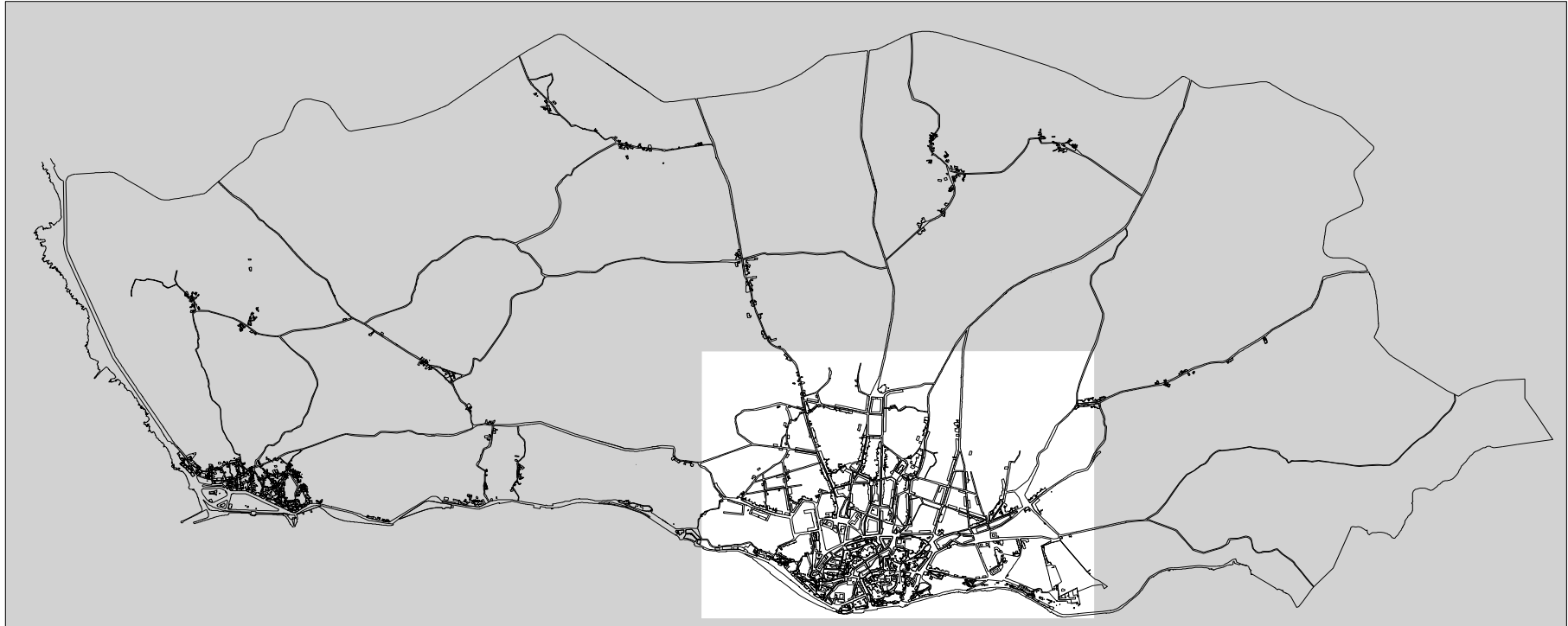
Source: AHMP (1987)

## 4. Expanding the city north and west



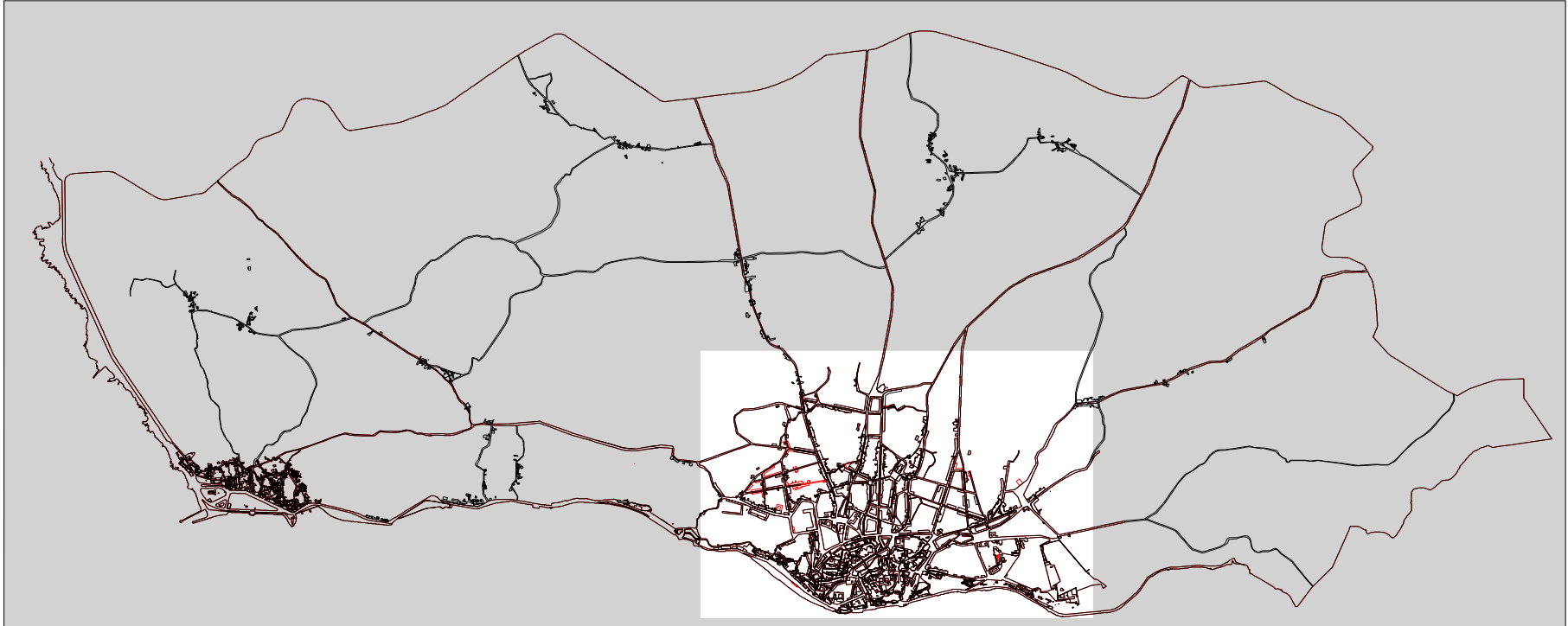
[illegible]

Porto 1813

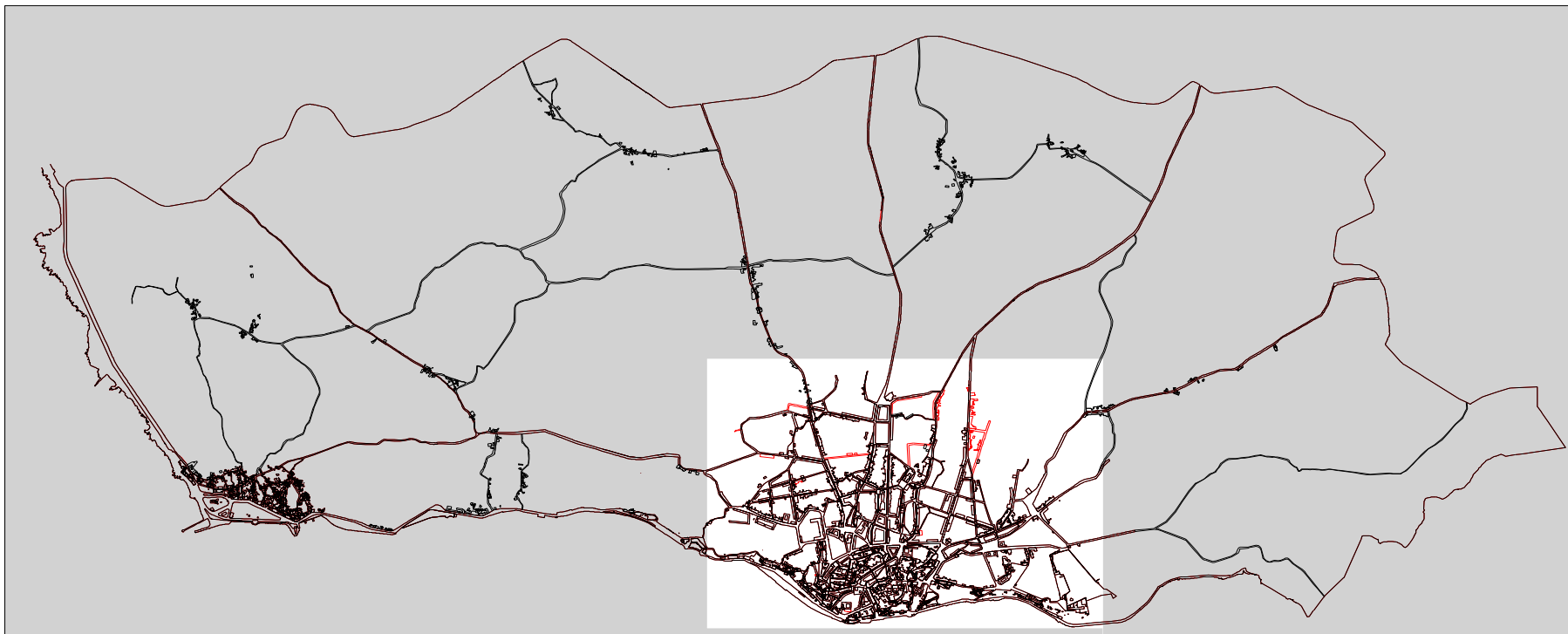


international seminar on urban form . 3-6 july . porto

Porto 1813 (black) - 1824 (red)

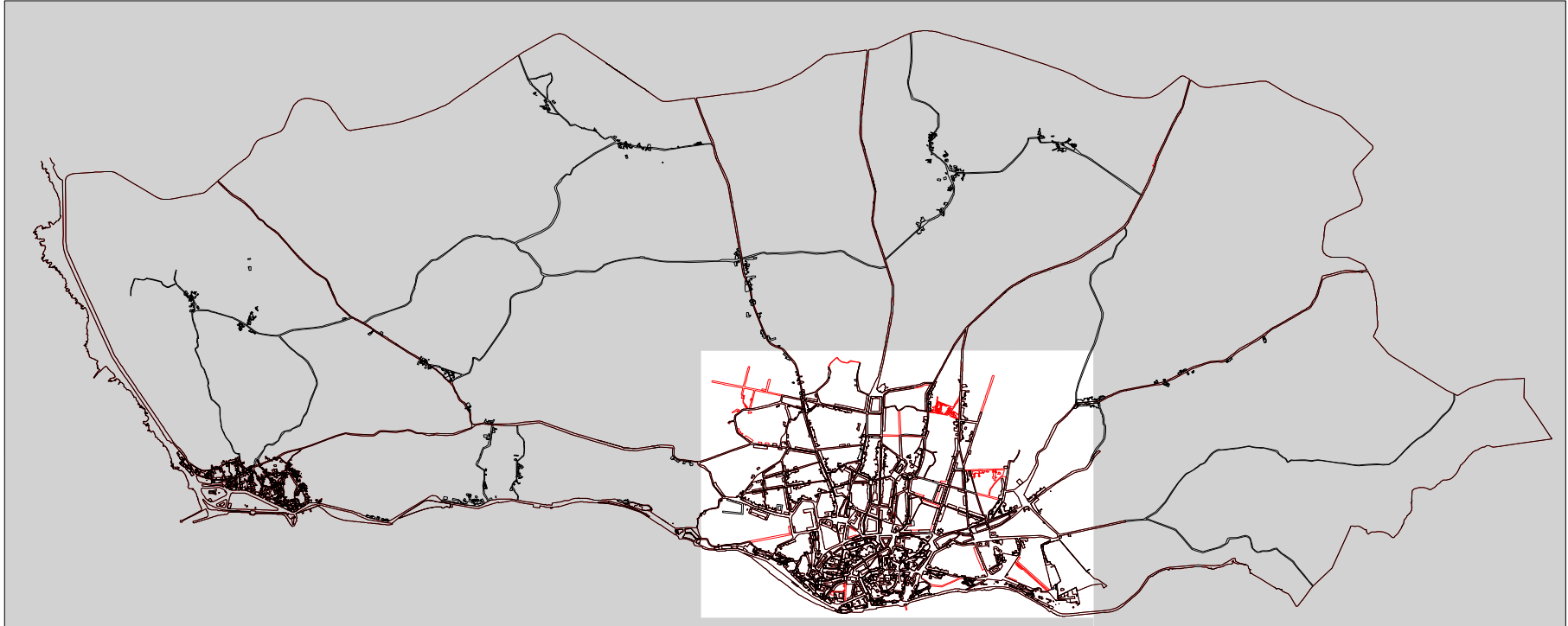


Porto 1824 (black) - 1833 (red)

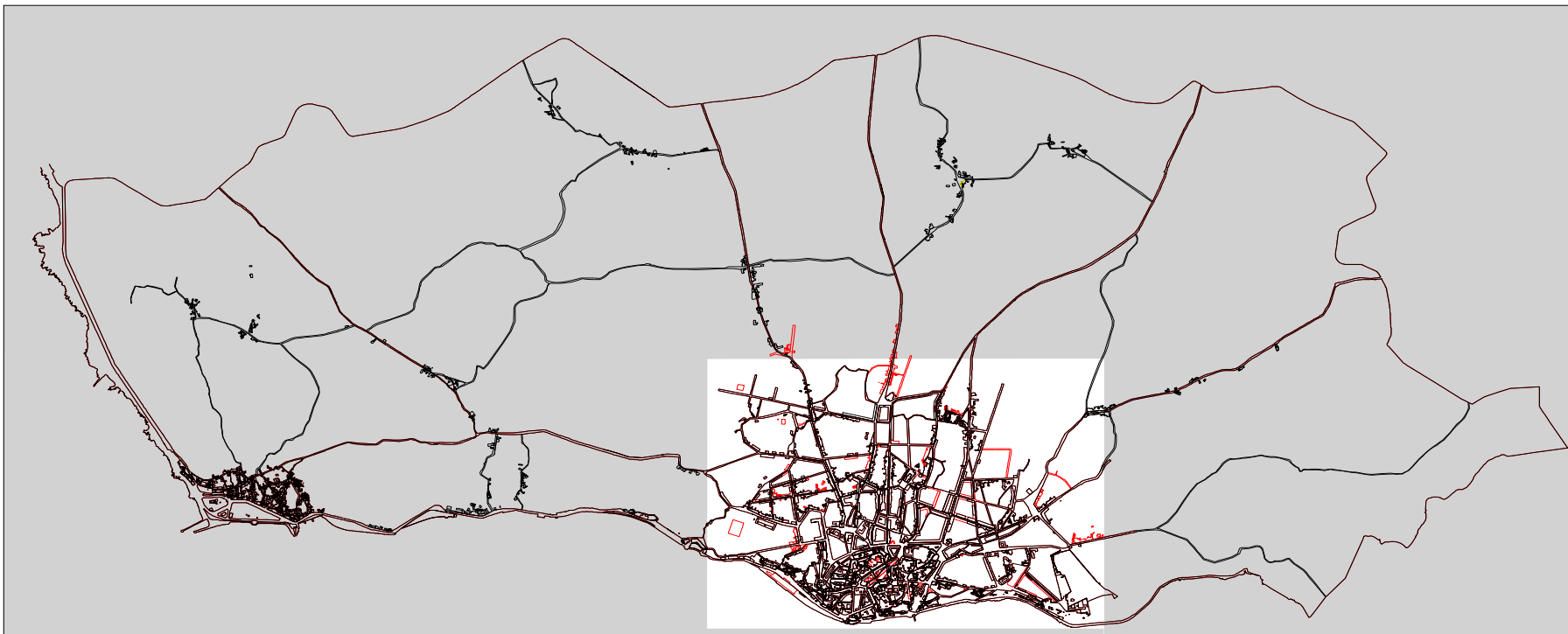




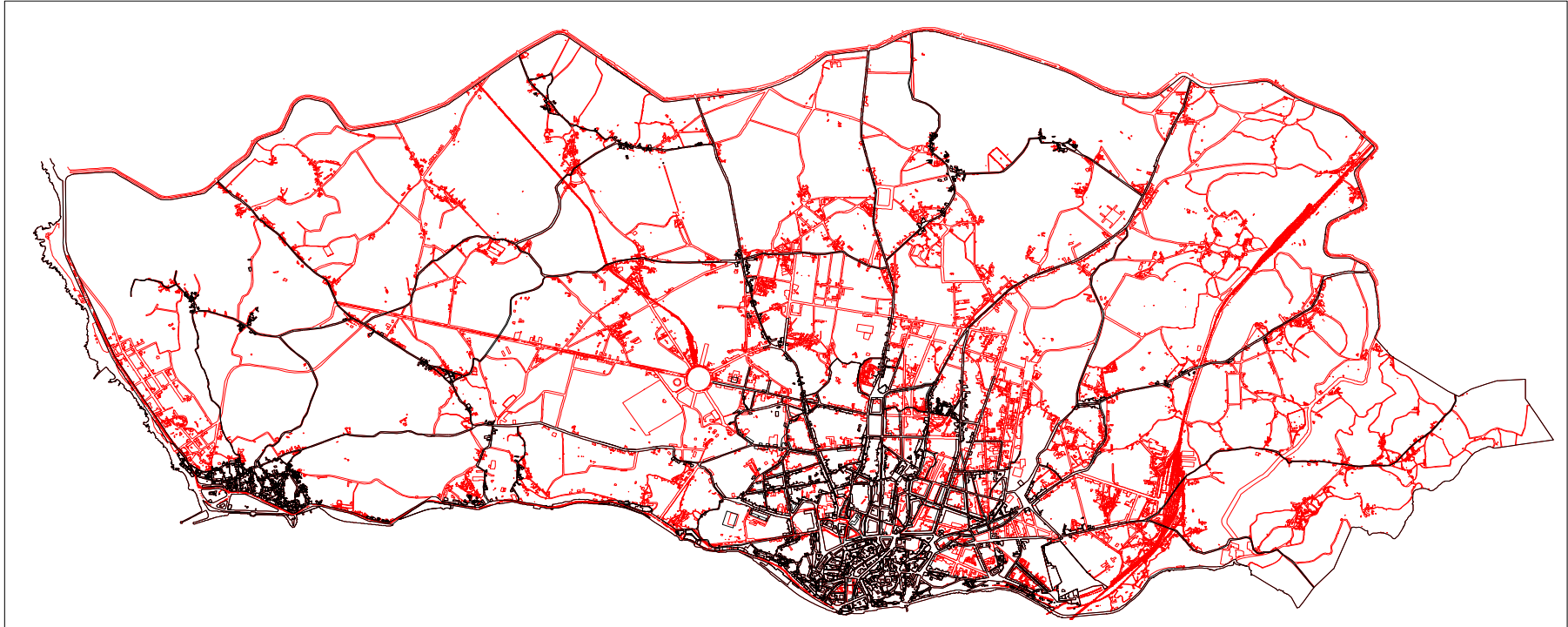
Porto 1833 (black) - 1839 (red)



Porto 1839 (black) - 1865 (red)



Porto 1865 (black) - 1892 (red)

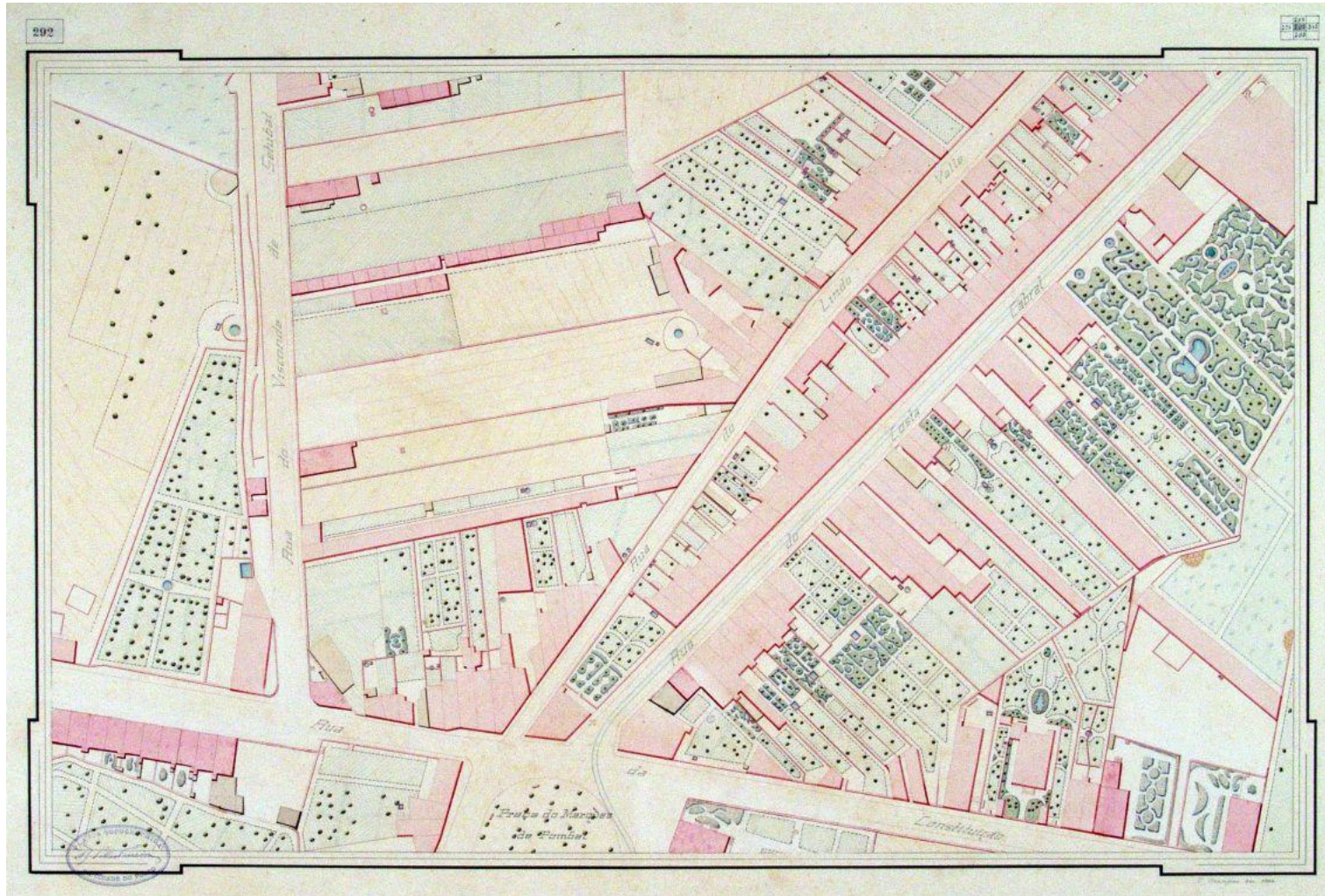


1892 *Planta Topográfica da Cidade do Porto* (1:5000) Telles Ferreira



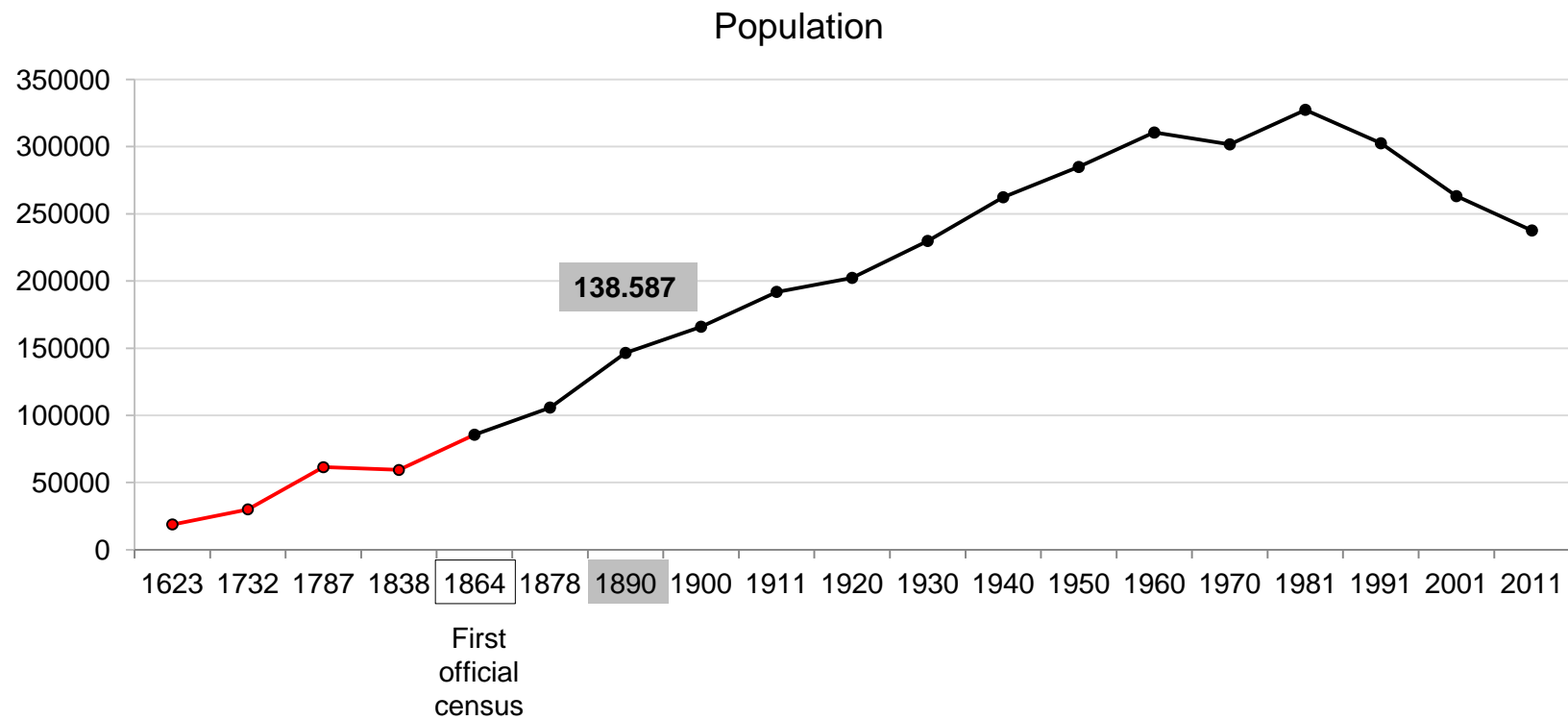


1892 *Planta Topográfica da Cidade do Porto* (1:500) Telles Ferreira



Porto 1865 (black) - 1892 (red)





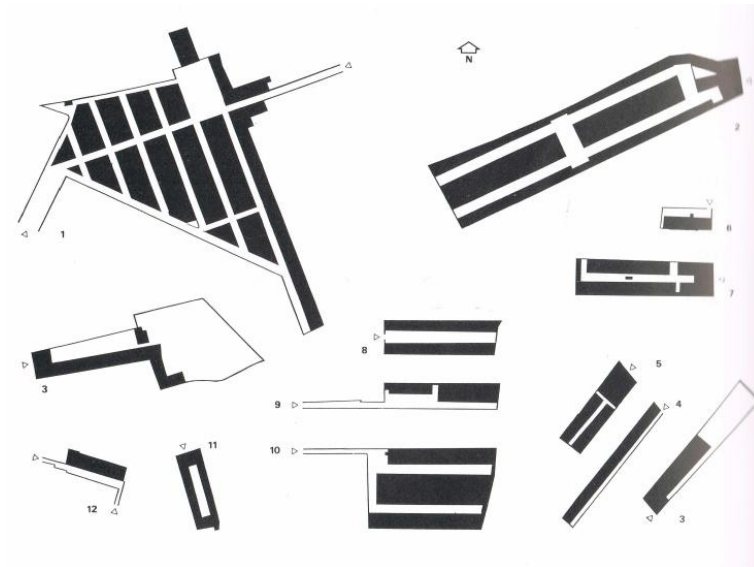


international seminar on urban form . 3-6 july . porto



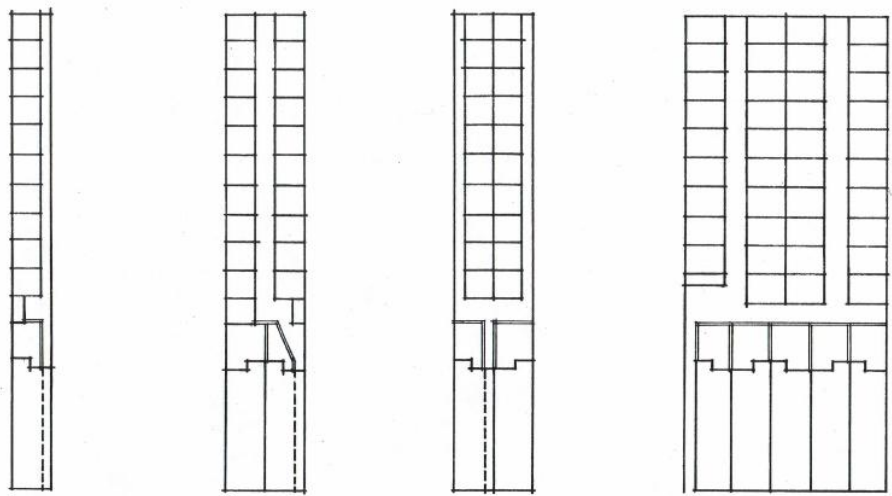
## The working class housing in the 19<sup>th</sup> century: the *ilhas*

The location and diversity of the *ilhas*

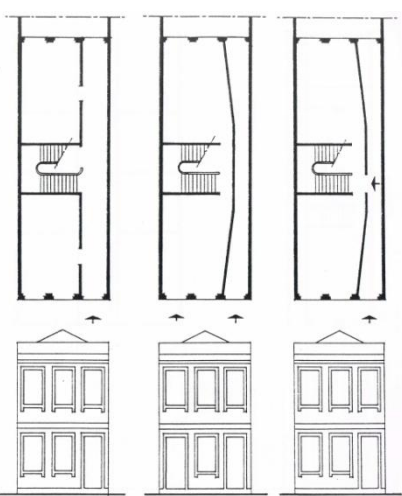


Source: Teixeira (1996)

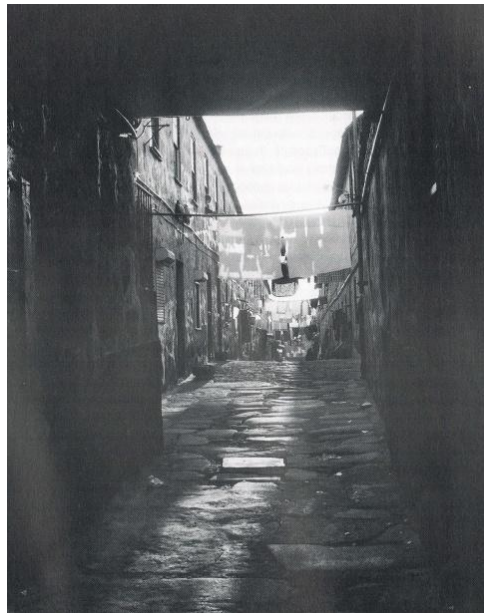
The types of *ilhas* and their relation with the street



Source: Teixeira (1996)



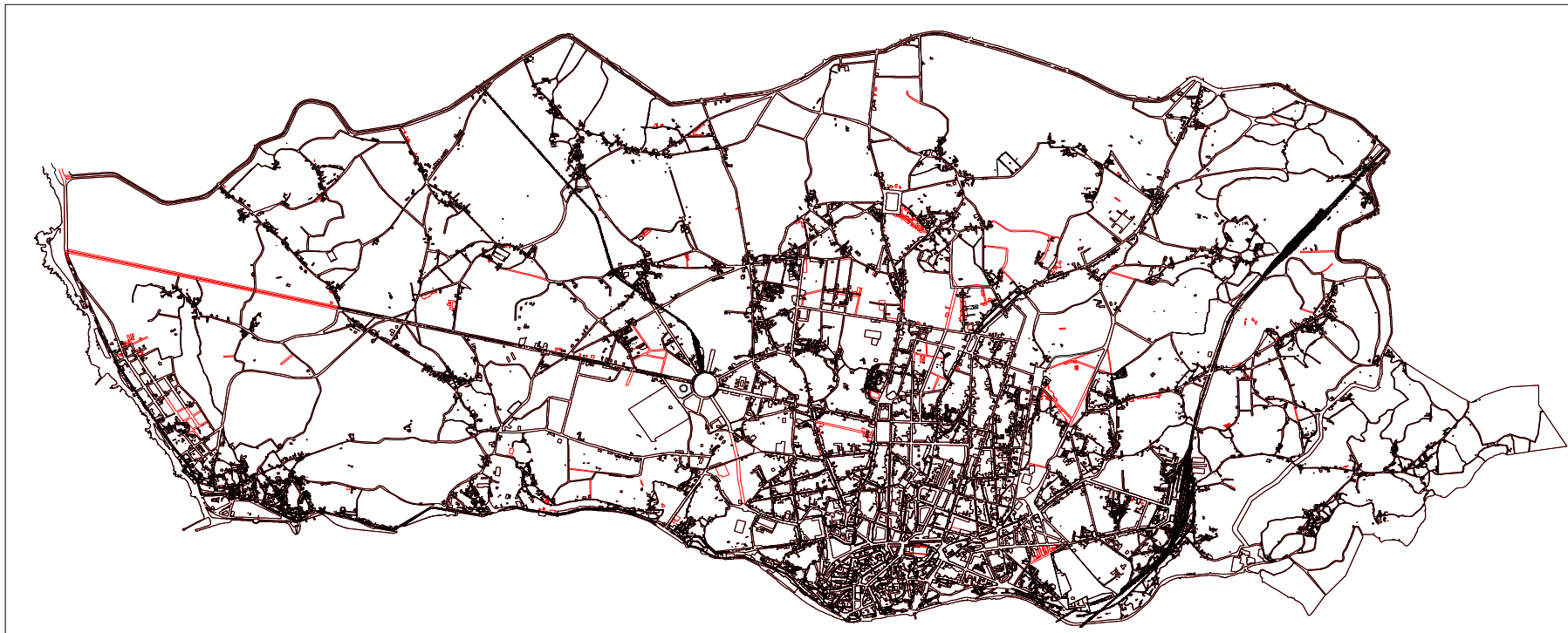
Source: Teixeira (1996)



Source: Teixeira (1996)

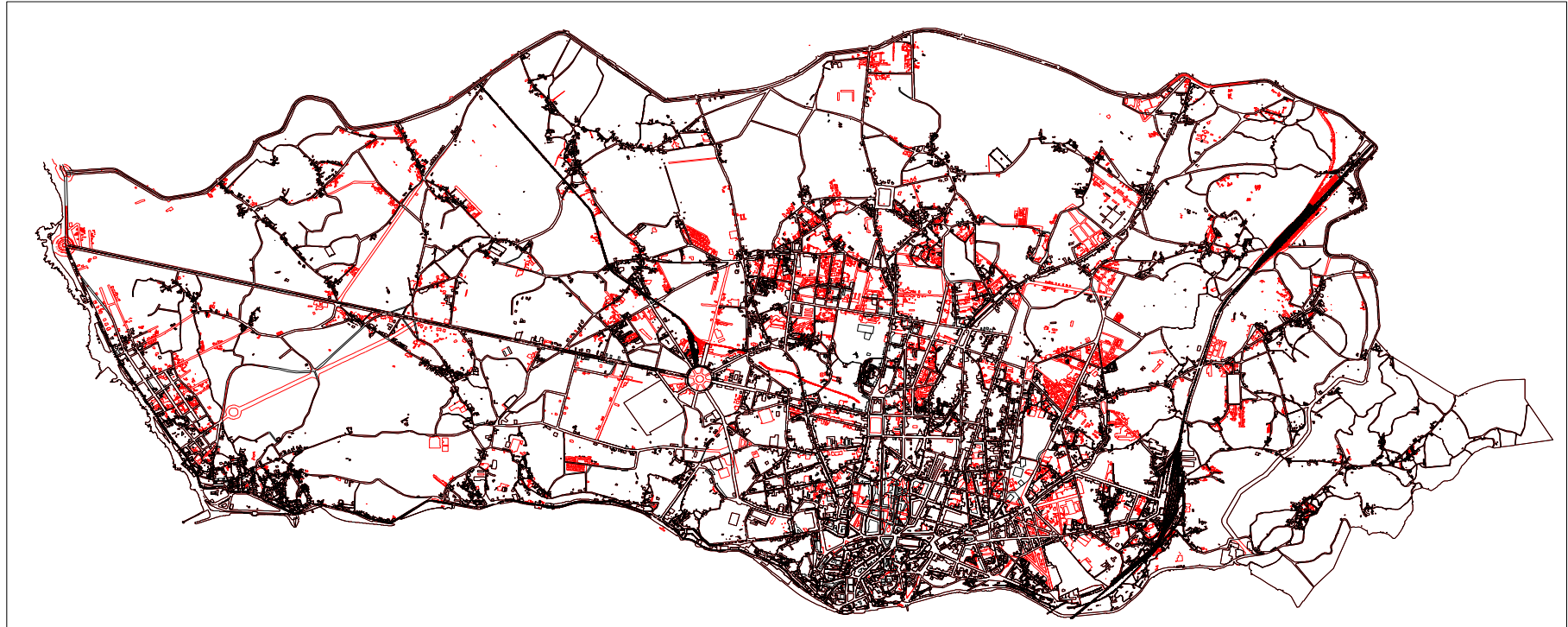
## 5. The city in the 20th century

Porto 1892 (black) - 1903 (red)

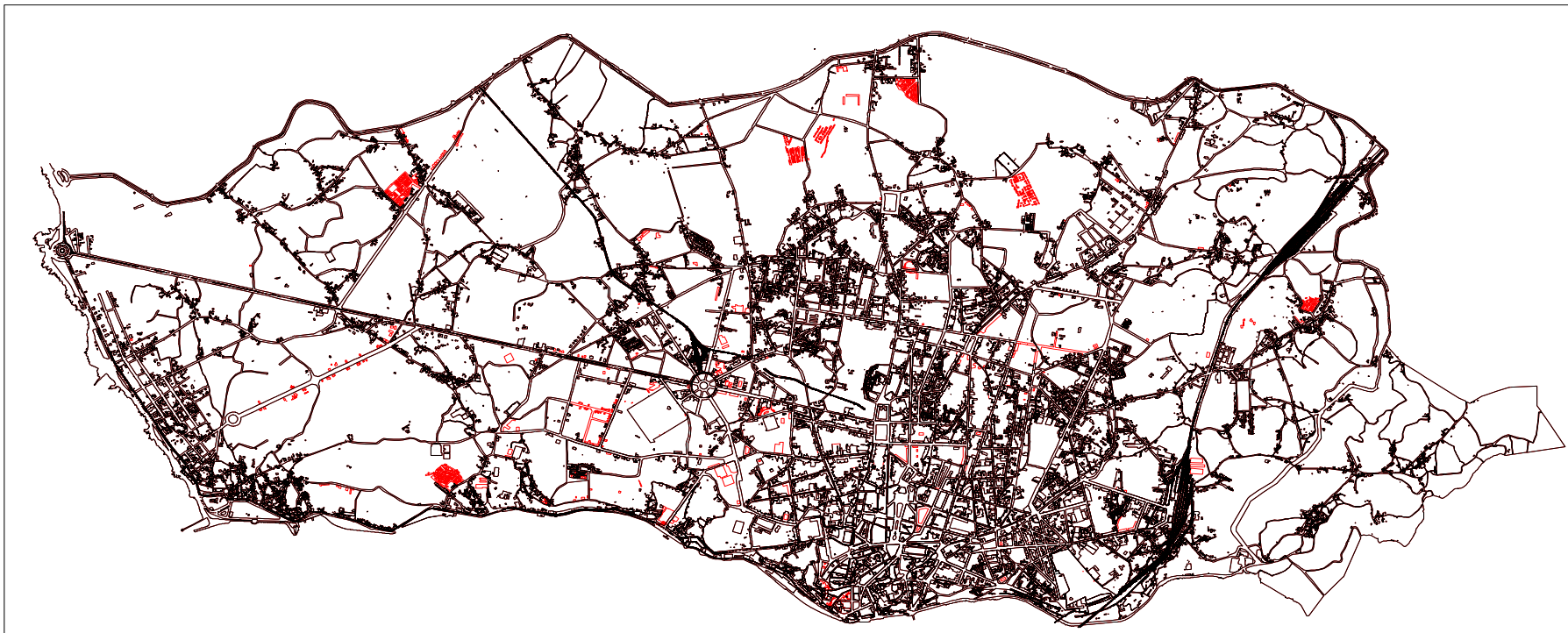




Porto 1903 (black) - 1932 (red)



Porto 1932 (black) - 1937(red)



Single-family houses (public promotion)



Source: AHMP

Porto 1937 (black) – 1948 (red)





Porto 1948 (black) – 1960 (red)





Porto 1960 (black) – 1978 (red)



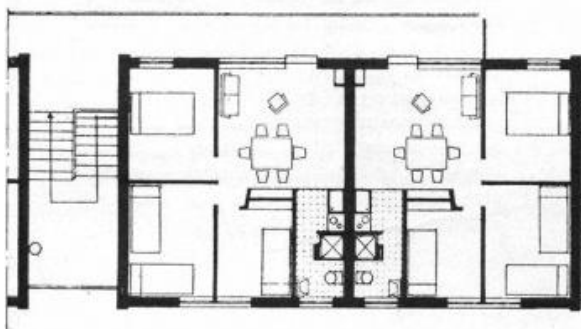
Apartment blocks (public promotion): the *Pasteleira* neighbourhood



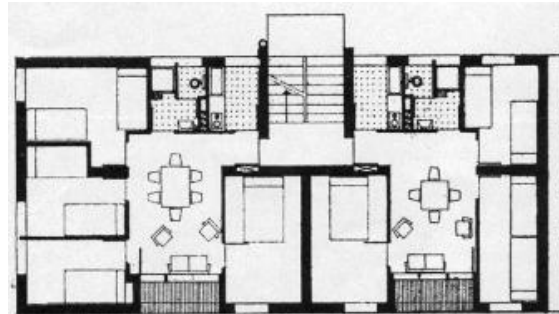
Source: AHMP

## Multi-family housing (public promotion): the *Pasteleira* neighbourhood – dwelling types

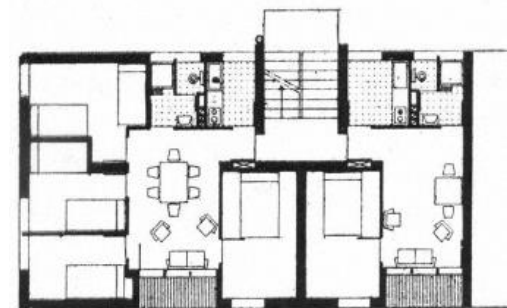
Several dwellings per floor  
Type 3 (3 bedrooms) + Type 3



Two dwellings per floor  
Type 4 (4 bedrooms) + Type 3 (3 bedrooms)



Type 4+T1 (1 bedroom)



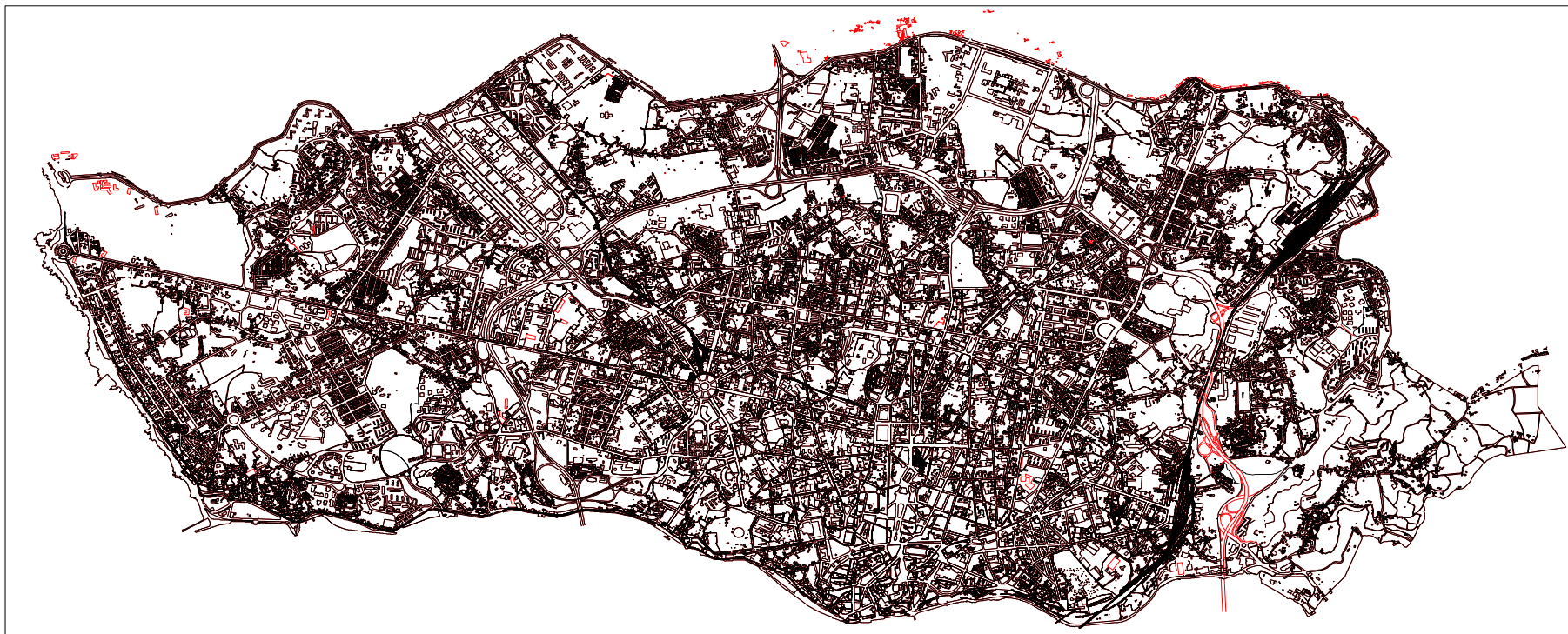
Source: AHMP

Porto 1978 (black) – 1992 (red)



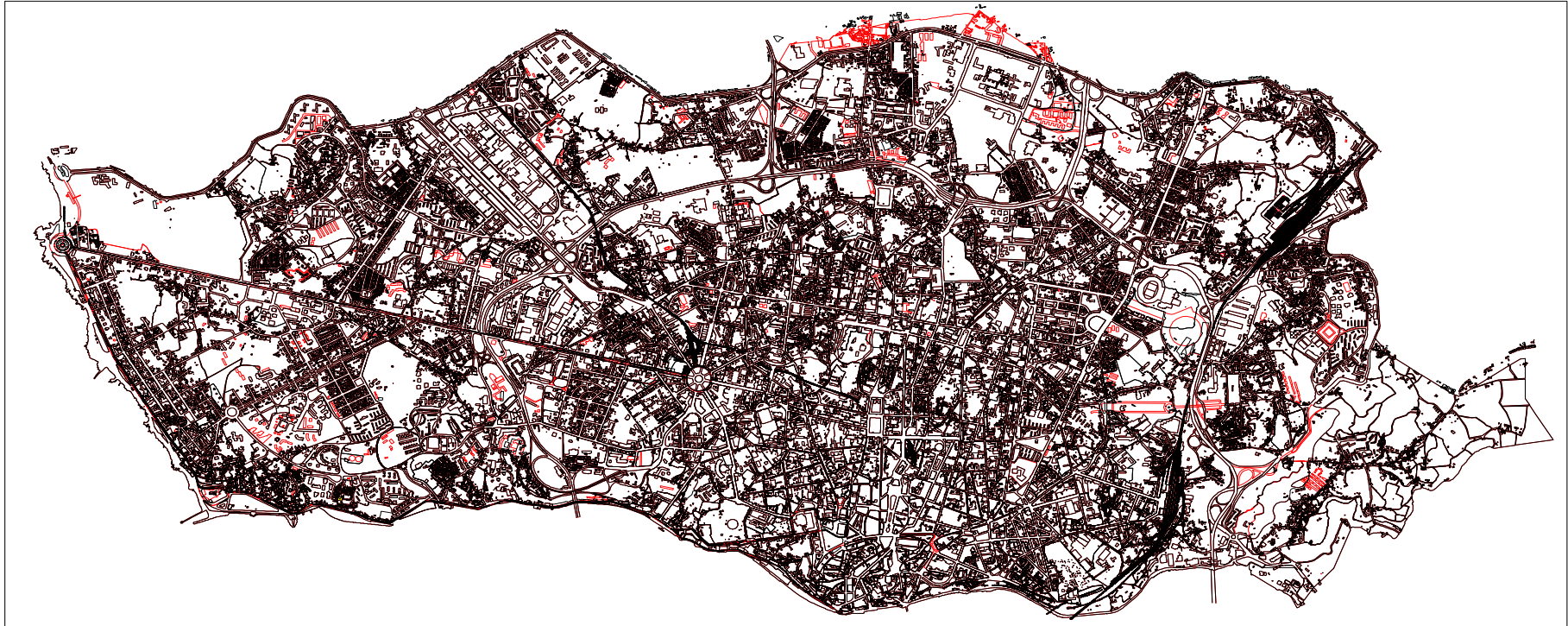


Porto 1992 (black) – 1997 (red)



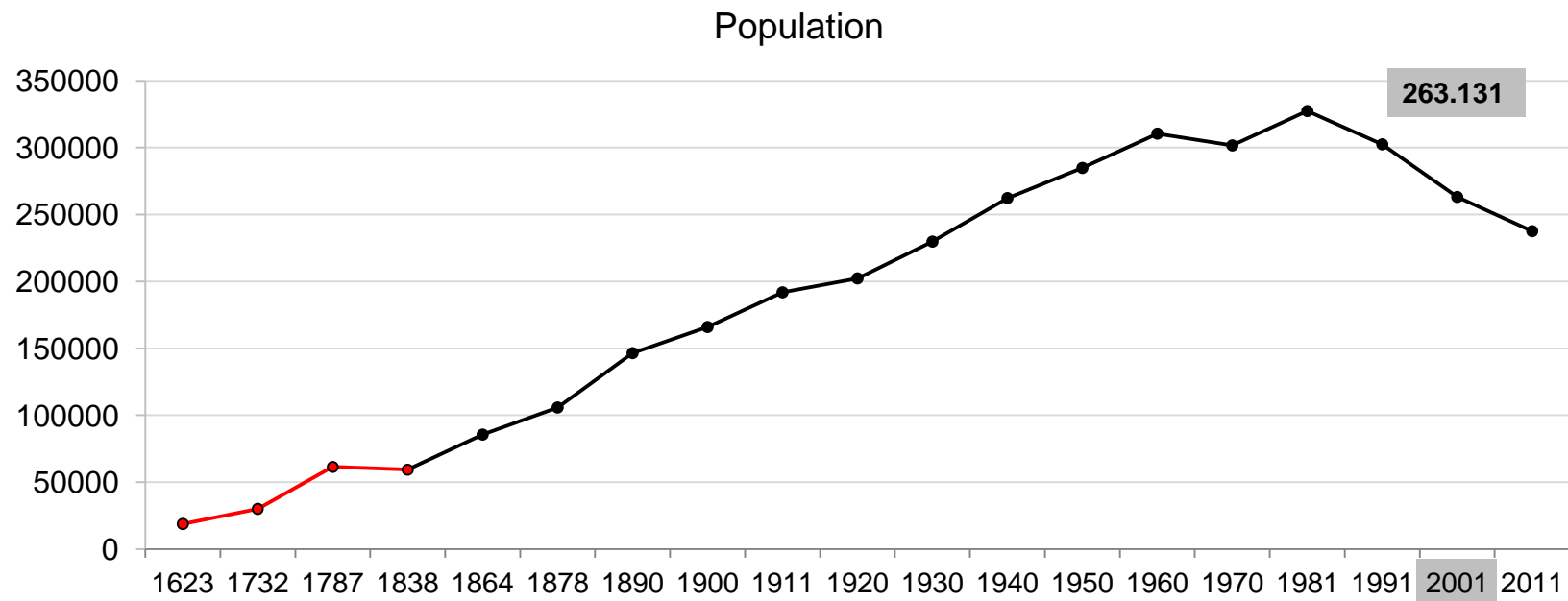


Porto 1997 (black) – 2003 (red)



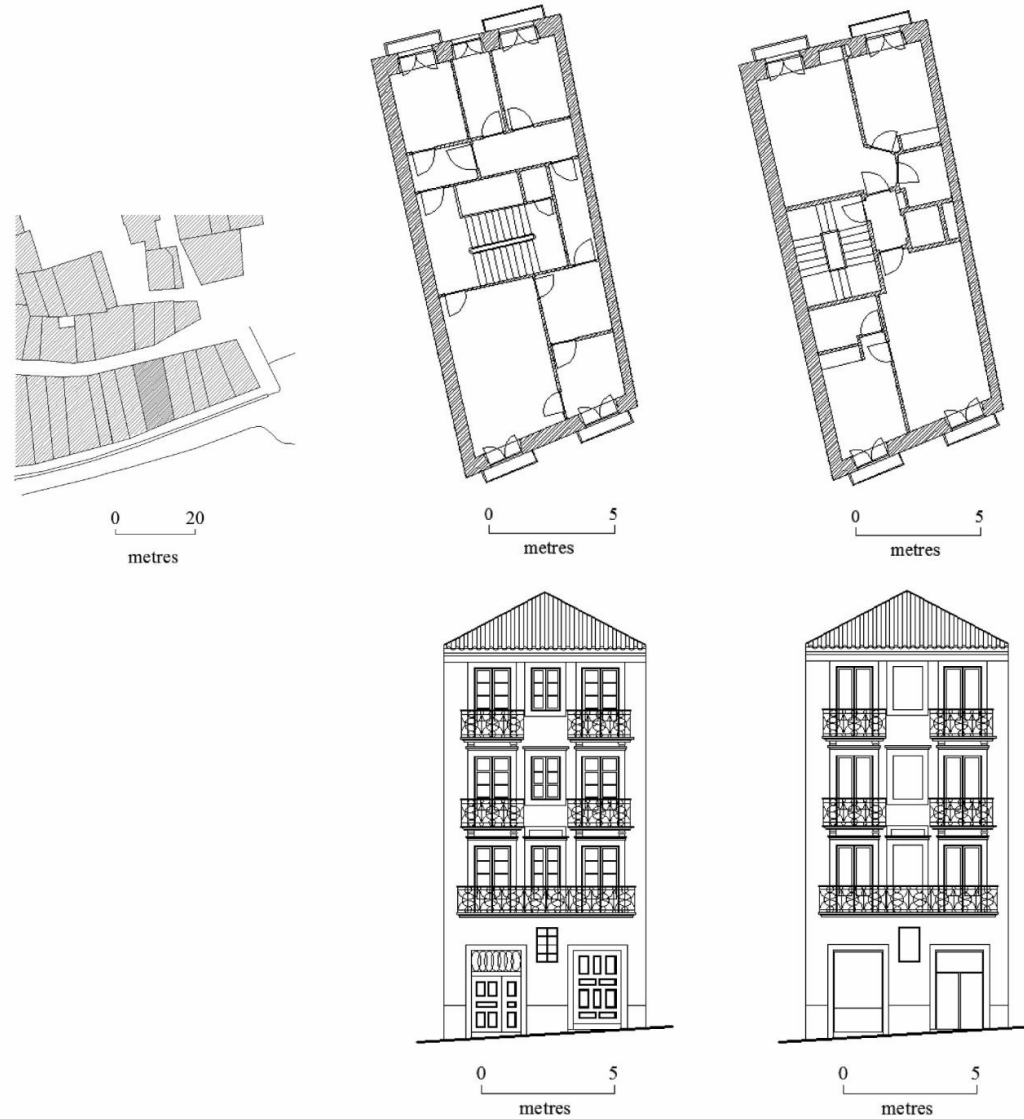


Source: Google Earth



## 6. Future challenges

## *Historical areas*



Transformation of internal structure and façade.

(a) Location plan.

(b) Floor plan and northern façade before transformation.

(c) Floor plan and northern façade after transformation.



*Campanhã (Lagarteiro)*



Source: Google Earth

## *Asprela*



Source: Google Earth



vitor oliveira the urban form of porto