



lindo vale row-house features concealed doors and dynamic shutters

99 Tweet	56 Like	101	349 g+1	3 Share	<ul style="list-style-type: none"> • Stur • Sub 	0
-------------	------------	-----	------------	------------	---	---

lindo vale row-house features concealed doors and dynamic shutters

photography by [josé campos](#)

this three storey row-house in the portuguese city of porto has been designed to offer its occupants a high degree of flexibility. interestingly, the architects behind the project, **cláudia monteiro** and **vitor oliveira**, are also the dwelling's

permanent tenants.



the structure relates in scale to its neighboring buildings

located in the center of the city, the structure relates in terms of scale to neighboring buildings, echoing the layout of a typical porto home with an inner room sandwiched between two more naturally illuminated volumes. at ground floor level, a library is joined by a large office, with primary living accommodation positioned above. the home's sleeping quarters are found at the uppermost level, where a void contains a rooftop terrace.



the entrance features a large retractable doorway

throughout the scheme a limited palette of materials and color ensures a cohesive and coherent response to the brief. walls, ceilings and doors are painted white, while beige vinyl flooring is used at each level. all rooms, with the exception of the bathrooms, have retractable and concealed sliding doors that allow fluid movement between each internal space.



the office at the lower level



dynamic shutters help control light within the property



the stairway is located at the center of the plan



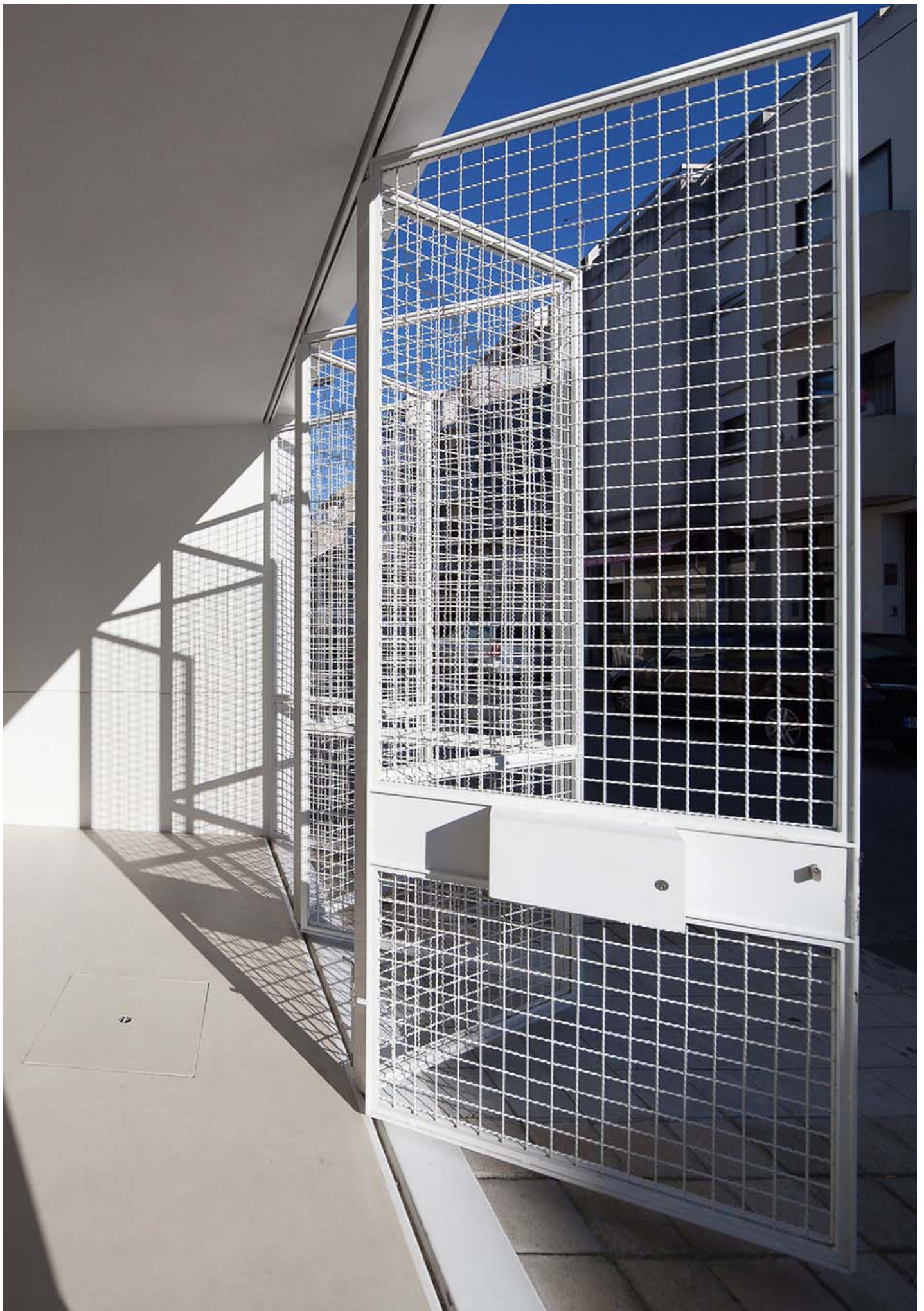
at the uppermost storey, a void contains an external patio



the bedroom



a small garden is found at the rear of the residence



photography by José Campos



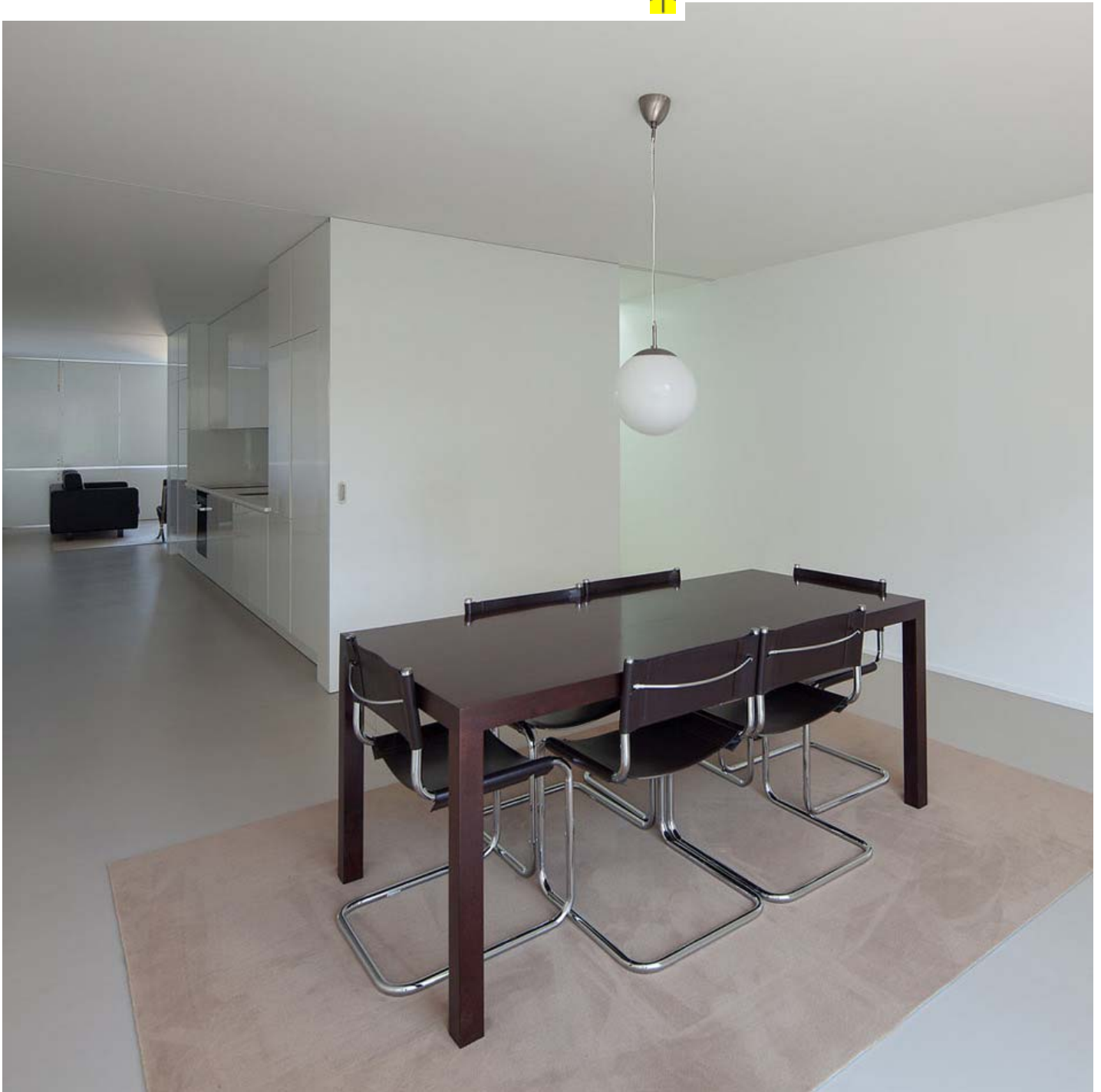
photography by josé campos



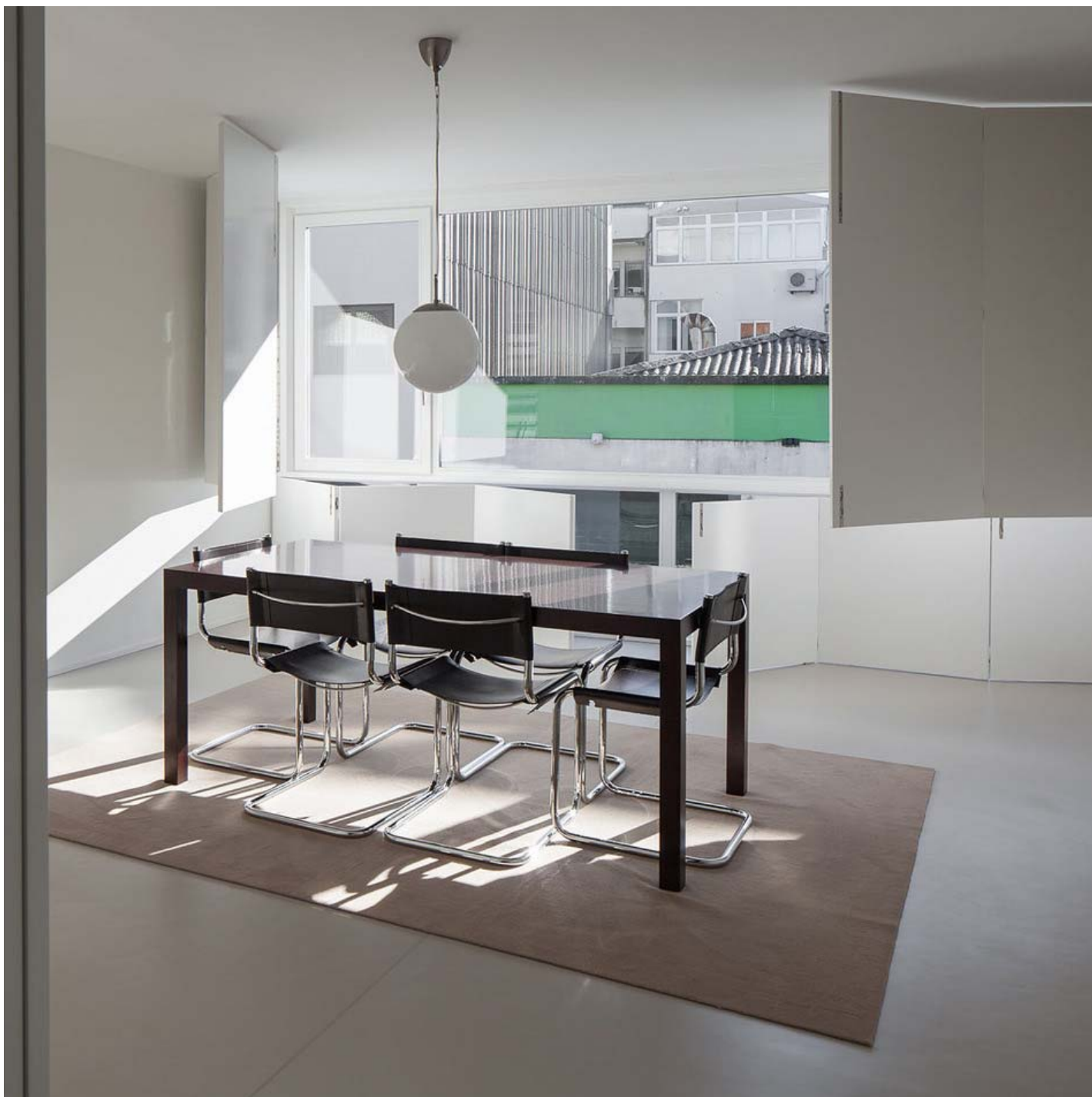
photography by josé campos



photography by José Campos



photography by josé campos



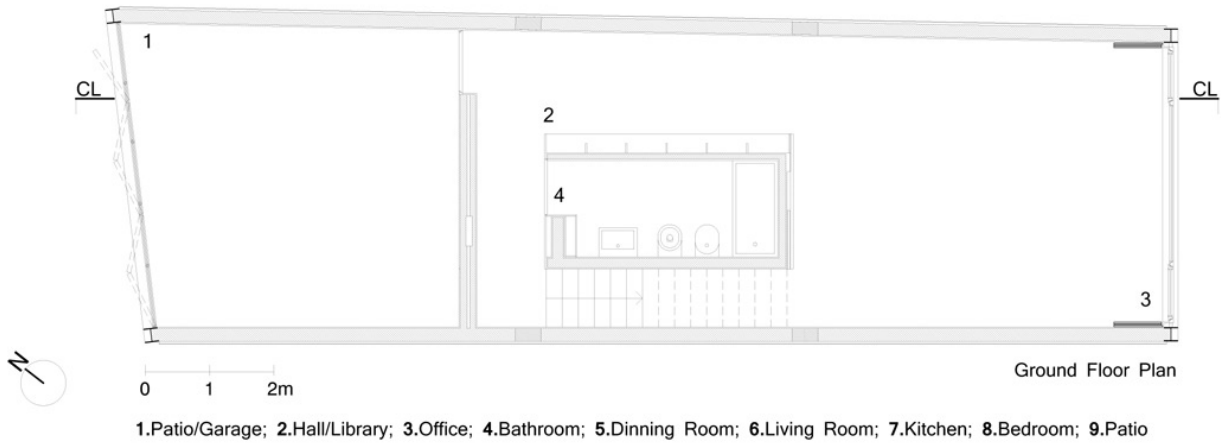
photography by josé campos



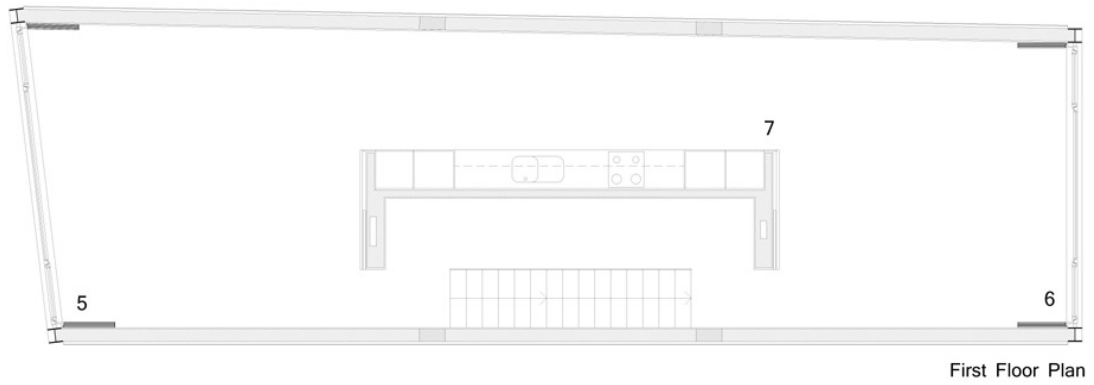
photography by josé campos



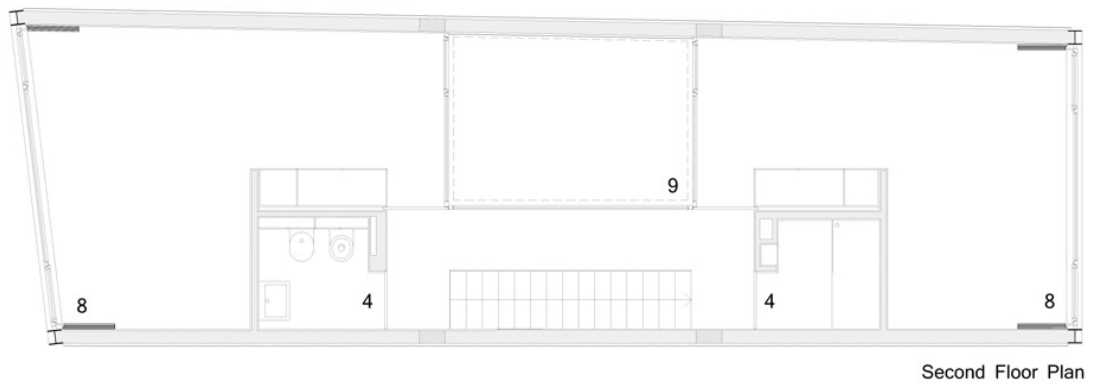
photography by josé campos



floor plan / level 0



floor plan / level +1



floor plan / level +2



Roof Plan

roof plan



Section

section



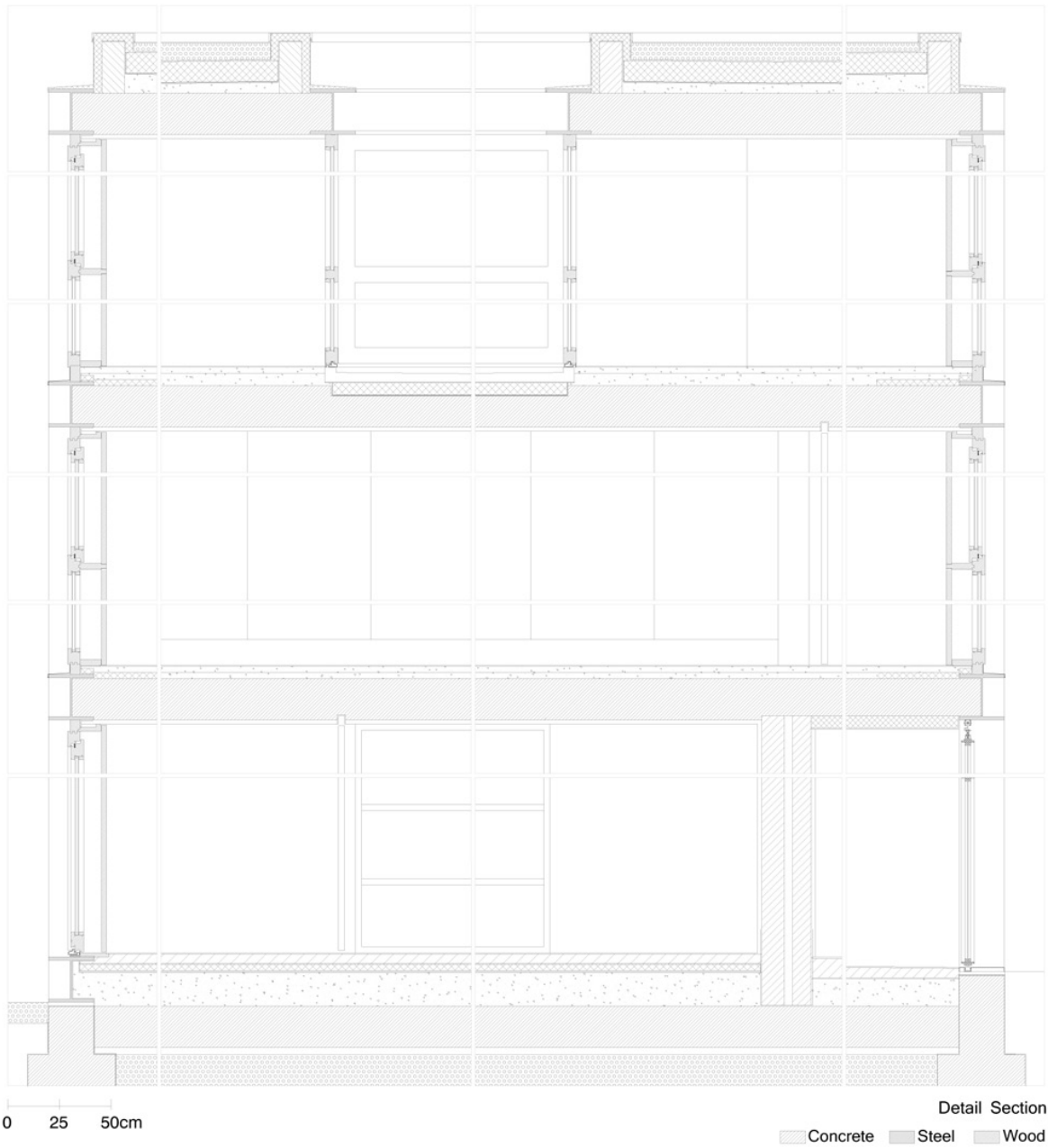
East Elevation

0 1 2m

elevation



elevation



detail section

philip stevens | designboom

feb 24, 2015

99 Tweet	56 Like	101	349 g+1	3 Share	• Stur • Sub	0
-------------	------------	-----	------------	------------	---	---